

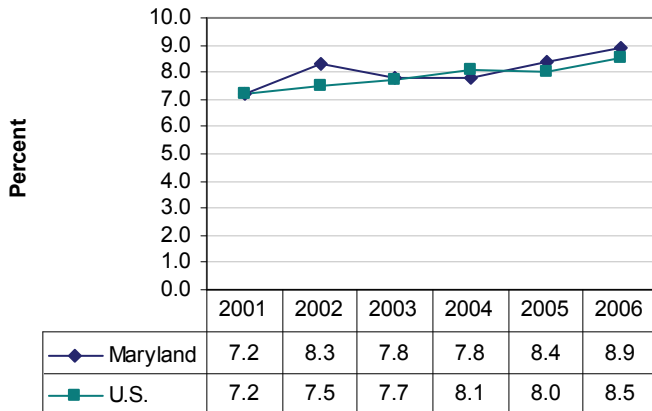


Data Brief #1:

The Burden of Asthma in Maryland

Asthma Prevalence

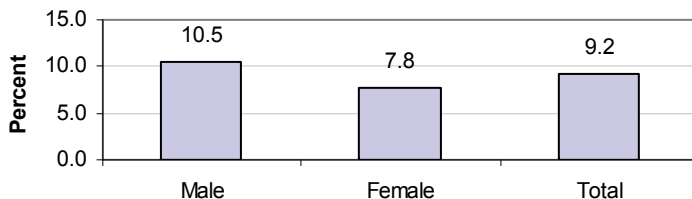
Asthma Current Prevalence for Adults, Maryland vs. United States, 2001-2006



Data Source: MD BRFSS, National BRFSS

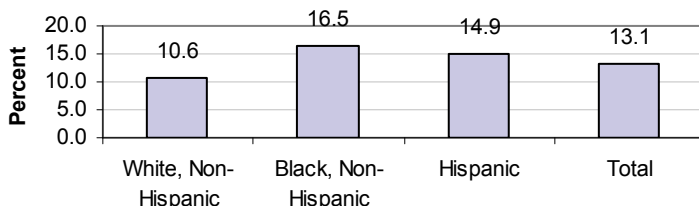
- Statewide, about 13.3% of Maryland adults and 13.1% of children have a history of asthma. About 8.7% of adults and 9.2% of children currently have asthma. An estimated 356,000 adults and 113,000 children currently have asthma. (2005-2006 combined estimates)**

Asthma Current Prevalence for Children (<18 years) by Gender, Maryland, 2005-2006 Combined



Data Source: MDBRFSS

Asthma Lifetime Prevalence for Children (<18 years) by Race/Ethnicity, Maryland, 2005-2006 Combined

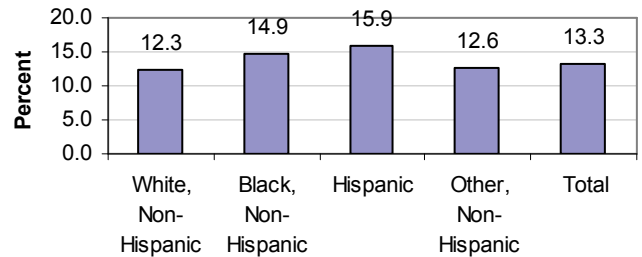


Data Source: MDBRFSS

Adults

Data on the proportion of Maryland adults who have asthma at a specific point in time (prevalence) is measured by the Behavioral Risk Factor Surveillance System (BRFSS). The number of adults reporting currently having asthma at the time of the survey increased over the last six years. Current prevalence for adults increased by 24% between 2001 and 2006. In 2006, Maryland's current prevalence for adults was slightly higher than the national percentage.

Asthma Lifetime Prevalence for Adults by Race/Ethnicity, Maryland, 2005-2006 Combined



Data Source: MDBRFSS

Children

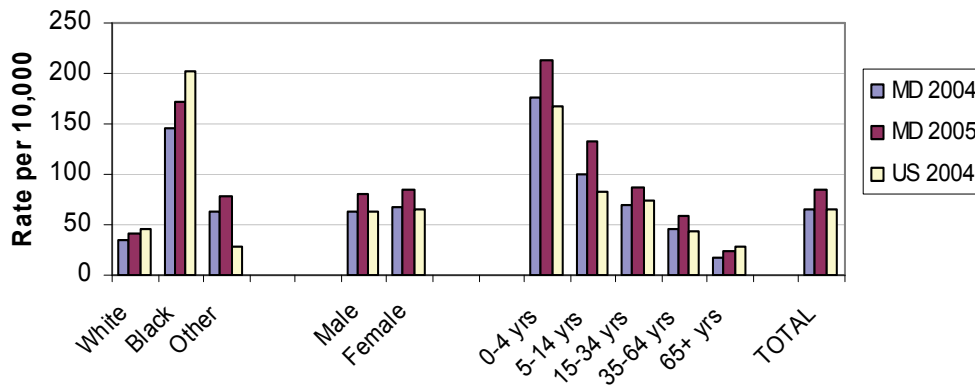
Asthma prevalence in children is also measured via the BRFSS. The percentage of children with current asthma is approximately 9.2% and is higher among boys than girls.

The percentage of children ever having been diagnosed with asthma, lifetime prevalence, is higher than current prevalence. African American children have the highest lifetime prevalence (16.5%) in Maryland.

The most recent data from the national BRFSS survey on childhood asthma is from 2004. Nationwide, the lifetime prevalence for childhood asthma is 11.8%. The current prevalence nationally is 8.3%. Maryland's most recent rates (2005-2006) are higher for both of these measures.

ED Visits and Hospitalizations

Asthma Emergency Department Visit Rates by Race, Gender, and Age, Maryland 2004, 2005 vs. U.S. 2004



Data Sources: MD: HSCRC (age adjusted to 2000 US population), US: CDC NCHS

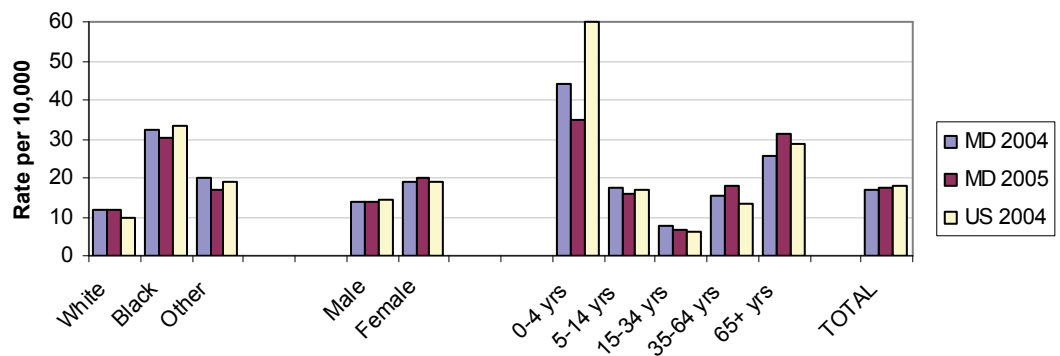
Data regarding emergency department (ED) visits and hospitalizations were derived from information provided by the Maryland Health Services Cost Review Commission (HSCRC). In 2005, African Americans had the highest ED visit rate (170.7 per 10,000), as compared to Whites and those of other races. Children less than 5 years of age had the highest visit rate (212.4 per 10,000). Rates declined with increasing age.

In 2005, the average cost of an ED visit due to asthma was \$667. Total costs for asthma ED visits in 2005 were over \$31million.

In 2005, asthma hospitalization rates were highest among African Americans (30.1 per 10,000), as compared to Whites and those of other races. Females were hospitalized more frequently than males. Children less than 5 years had the highest rates of hospitalization (35.0 per 10,000).

In 2005, the average cost of a hospitalization due to asthma was \$24,784. Total costs for asthma hospitalizations in 2005 were over \$49 million.

Asthma Hospitalizations by Race, Gender, and Age, Maryland 2004, 2005 vs. U.S. 2004



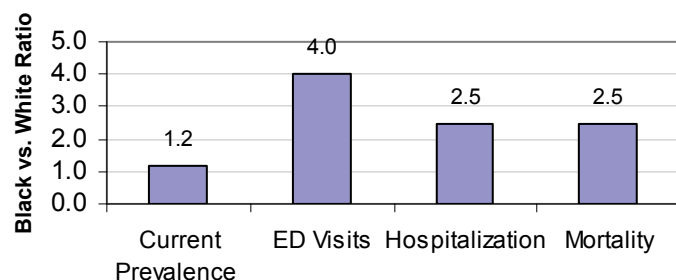
Data Sources: MD: HSCRC (Including MD resident data from DE, VA, PA, WV) - age adjusted to 2000 US population; US: CDC NCHS

Disparities

Although asthma prevalence is moderately elevated among African Americans compared to Whites, the rates of ED visits, hospitalizations, and deaths due to asthma are substantially higher.

Asthma lifetime prevalence is also higher among Hispanics compared to Whites.

Black-White Disparity Rate Ratios for Adults with Asthma, Maryland, Selected Years



Data Sources: Prevalence: MD BRFSS (combined 2005-2006)
ED Visits: MD HSCRC (2005)
Hospitalization: MD HSCRC+MD resident data from DE, VA, PA, WV (2005)
Mortality: MD VSA (combined deaths from 2002-2006)

This publication was supported by Cooperative Agreement Number 2U59EH324212-04 from the Centers for Disease Control and Prevention (CDC). Its contents are solely the responsibility of the authors and do not necessarily represent the official views of the CDC.