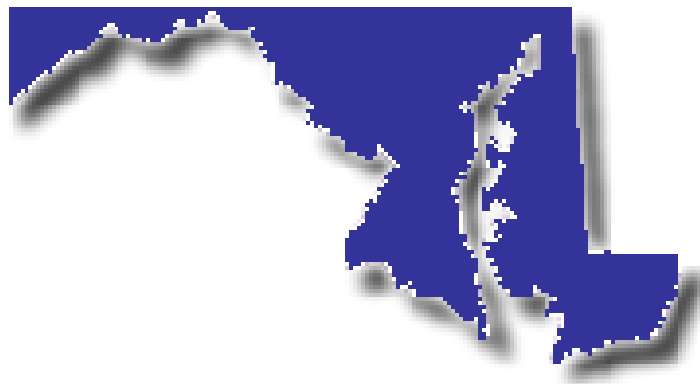


Violent Death in Maryland: A Descriptive Report



2004 Data

All Maryland Homicides, Suicides,
and Deaths of Undetermined Manner

Department of Health and Mental Hygiene
Family Health Administration
Center for Preventive Health Services

Violent Death in Maryland: A Descriptive Report

2004 Data

All Maryland Homicides, Suicides,
and Deaths of Undetermined Manner

Published October 2007

Report Prepared By:

Candice Smith, MPH

Ryan T. Shields

George Thorpe, M.D.

Tracey Serpi, Ph.D.

This publication was supported by Award Number U17/CCU322392-05 from the Centers for Disease Control and Prevention. Its contents are solely the responsibility of the authors and do not necessarily represent the views of the Centers for Disease Control and Prevention.

TABLE OF CONTENTS

	Page
Introduction	3
Methods	3
Resident Violent Death	5
Resident Homicide	6
Resident Suicide	13
Resident Deaths of Undetermined Manner	19
Comparison of 2003 & 2004 Maryland Violent Deaths	25
Appendix	29

ACKNOWLEDGEMENTS

The Maryland Violent Death Reporting System (MVDRS) is a state subsidiary of the National Violent Death Reporting System (NVDRS), administered and funded by the National Centers for Disease Control and Prevention (CDC). The CDC provides overall financial and database support, as well as coordination between the various states engaged in this ambitious scientific effort. Together, it is our hope that this MVDRS report will provide guidance to public and private efforts to reduce the incidence of violent death in Maryland society.

This particular report is a product of the collective effort of many professionals. We especially thank the Office of the Chief Medical Examiner and the Vital Statistics Administration, without whose assistance no part of this report would be possible. Additionally, cooperation of the Maryland State Police and county and local law enforcement agencies throughout Maryland provided information that added significant detail to the characteristics of the violent incidents within which these deaths were embedded.

We also acknowledge the work of the Maryland Department of Health and Mental Hygiene's Center for Preventive Health Services and, in particular, Tracey Serpi's able leadership as Principal Investigator. George Thorpe (Project Manager), Candice Smith (Epidemiologist), Ryan Shields, Brian Ward, Paul Patrick, Bailey Susic, and Daniel Madron (Records Analysts) were responsible for data acquisition and analysis.

Introduction

Deaths attributed to violence in the United States are a major public health concern. There are roughly 50,000 U.S. victims of violent death annually. As part of a public health campaign to address the burden of these potentially preventable deaths, a National Violent Death Reporting System is creating opportunities to study and monitor the violent deaths occurring in our country.

In 2000, Congress approved funding for the creation of the National Violent Death Reporting System (NVDRS) to be administered by the Centers for Disease Control and Prevention (CDC). The CDC is responsible for providing directives and guidance for states participating in the surveillance system.

Based on the World Health Organization's (WHO) definition, violent death is "a death resulting from the intentional use of physical force or power against oneself, another person, or against a group or community".¹ The NVDRS collects information on when, where, and how these violent deaths happen, and attempts to gather additional information that may provide population-level insight into "why" these deaths occur. These findings will aid in the design and implementation of prevention/intervention efforts as well as the promotion of comprehensive and effectual policy solutions.

Currently, the CDC is funding 17 states to implement the NVDRS. The Maryland Department of Health and Mental Hygiene, Center for Preventive Health Services, was awarded funding for the implementation of the Maryland Violent Death Reporting System (MVDRS) in 2002. The first year of data collected for the MVDRS was 2003.

This descriptive report on violent deaths in Maryland during 2004 presents the information in four categories: all violent deaths, homicides, suicides, and undetermined deaths (inclusive of only Maryland residents), followed by the characterization of Maryland occurrent violent deaths (inclusive of both Maryland and non-Maryland residents).

Methods

The NVDRS implements uniform definitions and a project-specific software to create state-level databases that can be used to monitor and track trends of violent deaths. The database is structured to create separate observations for each individual death, aggregated within violent death incidents. Each incident has data that has been collected from a variety of sources, including death certificates, autopsy and scene inspection reports, and police reports. Under this arrangement, a single violent death incident must describe at least one violent death, but may associate multiple violent death victims.

The types of violent death described in this report include three categories specified by the NVDRS: Suicide, Homicide, and deaths of Undetermined Manner. The functional definitions for the following categories have been taken directly from the Coding Manual (version 2, 2004):¹

Suicide:

A death resulting from the intentional use of force against oneself. A preponderance of evidence should indicate that the use of force was intentional.

Homicide:

Homicide is defined as a death resulting from the intentional use of force or power, threatened or actual, against another person, group, or community. A preponderance of evidence must indicate that the use of force was intentional.

Undetermined Manner of Death:

A death resulting from the use of force or power against oneself or another person for which the evidence indicating one manner of death is no more compelling than the evidence indicating another manner of death.

The data for the Maryland Violent Death Reporting System were obtained from the medical examiner's records, death certificates, police reports, and some supplemental homicide reports. Data collection began with the electronic import of death certificates from the Maryland Vital Statistics Administration whose International Classification of Disease, Tenth Revision (ICD-10) code cause of death was consistent with the definition of violent death set forth by the CDC (See Appendix for codes). A similar query was provided by the Office of the Chief Medical Examiner (OCME), based on the OCME-determined manner of death. These lists were reconciled, employing the CDC-prescribed functional definition of violent death whenever necessary. The information was then gathered from the documents in accordance with the CDC's national project.

For those incidents that did not have a police report available in the OCME file, the individual police agencies were contacted and the needed reports sought. An abstractor reviewed these reports in the same fashion as the OCME files were reviewed. Once all obtainable information was entered for each incident and internal quality control exercises were completed to ensure the integrity of the database, the data were determined ready for interpretation.

Data for this publication were taken from one or a combination of these sources depending on what source had been given primacy for a particular variable. Whenever conflicting or missing documentation was present between sources, a system of document authoritative primacy allowed the analyst to choose the document source for a particular item of information in a disciplined, orderly fashion. Using this method to retrieve data allowed analysis of the most complete information available from the database. The order of primacy is different for each variable. The directive for primacy is found in the National Violent Death Reporting System Coding Manual (<http://www.cdc.gov/ncipc/pub-res/nvdrs-coding/Fullmanual.pdf>).

Case assignment for this analysis was based on the manner of death reported by the OCME. For this reason, frequency numbers for cases may differ slightly from those found in violent death figures published by the Vital Statistics Administration or in other MVDRS reports which use the ICD-10 code definition. The statistical software for analysis was SPSS. Rates for 2004 were calculated using the population estimates data from the U.S. Bureau of the Census.²

¹ Centers for Disease Control and Prevention, National Violent Death Reporting System Coding Manual, (Atlanta, GA 2004)

² CC-EST2003-alldata-[ST_FIPS]: County Characteristics Population Estimates Data; 7/1/2003 County Characteristics Estimates File; Release Date: September 30, 2004; Source: Population Estimates Program, U.S. Bureau of the Census

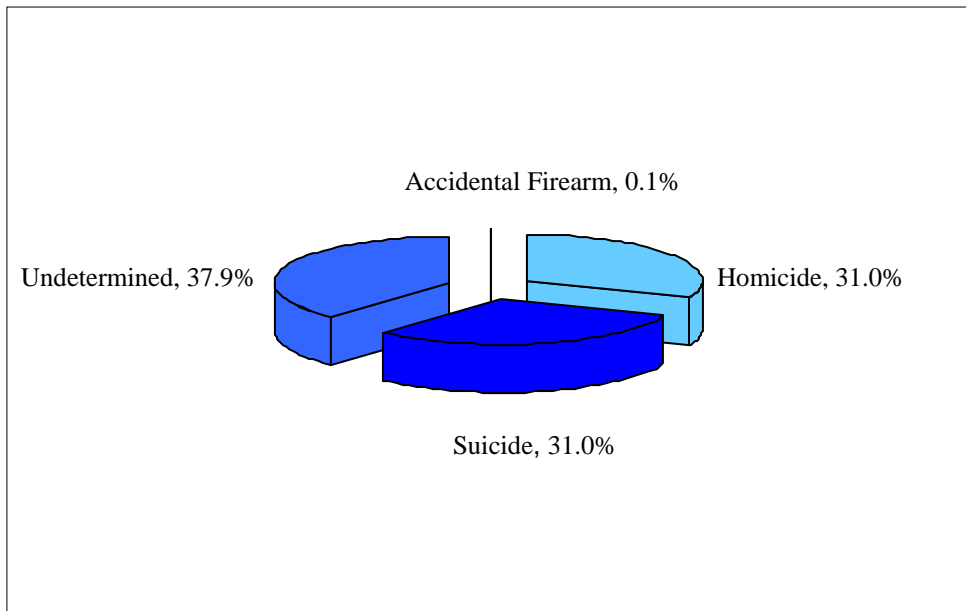
MARYLAND RESIDENT VIOLENT DEATH, 2004

HIGHLIGHTED FINDINGS

- ❖ Among Maryland residents, there were a total of 1521 violent deaths recorded into MVDRS.
- ❖ The 40-44 year old age group had the greatest number of violent deaths (195).
- ❖ Among age groups, the 20-24 age group experienced the highest rate per 100,000 persons (49.7).
- ❖ The ratio of male to female violent deaths was 3.6 to 1.
- ❖ The majority of violent deaths occurred among Whites (56.6%).
- ❖ The ratio of Whites to Blacks involved in violent deaths was 1.3 to 1.
- ❖ The majority of violent death victims were unmarried.

Note: All Violent Deaths include a small number (2) of accidental firearm deaths.

Figure 1. MARYLAND RESIDENT VIOLENT DEATHS BY MANNER, 2004.



MARYLAND RESIDENT HOMICIDE, 2004

HIGHLIGHTED FINDINGS

- ❖ MVDRS captured 472 Maryland resident homicide victims. This homicide rate was 8.5 deaths per 100,000 persons. [Although the MVDRS database includes victims who were residents of other states, those victims are not included in the Maryland resident homicide tables. (Table 1)]
- ❖ The median age of homicide victims was 26 years. The average age of homicide victims was 31 years.
- ❖ Among males, the greatest homicide rate (58.1 per 100,000 persons) was experienced in those between the ages of 20 and 24. (Table 4)
- ❖ There were approximately 6 times as many male homicide victims as female homicide victims. (Table 3)
- ❖ The majority of homicides occurred among black males (83% or 43.7 per 100,000 black-male residents). (Table 3)
- ❖ Blacks died from homicide at 8.7 times the group-specific rate of Whites and 22.7 times the group-specific rate of Other Races (22.7 per 100,000 persons compared to 2.6 per 100,000 for Whites and 1.0 per 100,000 for Other Races). (Table 3)
- ❖ Baltimore City had the greatest number of homicides at 266 victims (56.4%). (Table 7)

Table 1. NUMBERS, PERCENTS, AND RATES OF MARYLAND RESIDENT HOMICIDE, 2004.

Sex	Number	%	Rate ¹
Male	406	86	15.1
Female	66	14	2.3
Total	472	100	8.5

Race	Number	%	Rate ¹
White	95	20.1	2.6
Black	374	79.2	22.7
Asian/Pacific Islander	3	0.6	1.1
Total	472	100	8.5

Age Group	Number	%	Rate ¹
00 - 04	12	2.5	3.2
05 - 09	2	0.4	-
10 - 14	7	1.5	1.7
15 - 19	66	14	16.7
20 - 24	116	24.6	31.7
25 - 29	85	18	25.5
30 - 34	50	10.6	13.2
35 - 39	39	8.3	9.2
40 - 44	33	7	7
45 - 49	24	5.1	5.4
50 - 54	17	3.6	4.4
55 - 59	7	1.5	2.1
60 - 64	3	0.6	-
65 - 69	3	0.6	-
70 - 74	3	0.6	-
75 - 79	2	0.4	-
80 - 84	2	0.4	-
Unknown	1	0.2	-
Total	472	100	8.5

¹ Rate per 100,000 Population

- Rates were not calculated for counts under 5.

Figure 2. AGE DISTRIBUTION OF MARYLAND RESIDENT HOMICIDES, 2004.

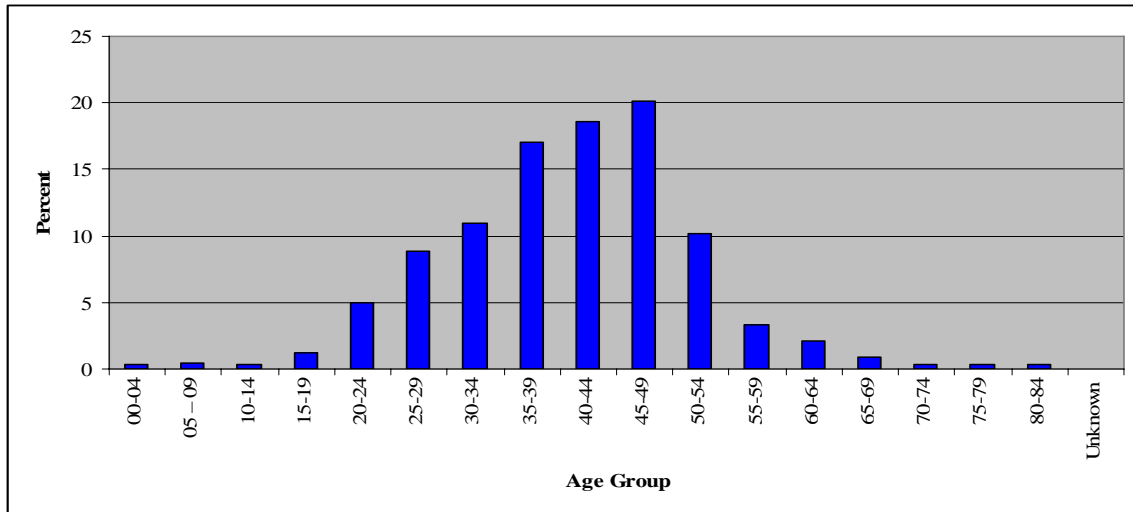


Table 2. METHOD OF FATAL INJURY AMONG MARYLAND RESIDENT HOMICIDE, 2004.

Method of Fatal Injury	Number	%
Firearm	352	74.6
Sharp Instrument	56	11.9
Blunt Instrument	28	5.9
Hanging, Strangulation, Suffocation	16	3.4
Other	5	1.1
Shaking	3	0.6
Personal Weapons	3	0.6
Fire or Burns	3	0.6
Poisoning	2	0.4
Fall	2	0.4
Drowning	1	0.2
Unknown	1	0.2
Total	472	100

Table 3. NUMBERS, PERCENTS, AND RATES OF MARYLAND RESIDENT HOMICIDE VICTIMS BY RACE AND GENDER, 2004.

	Male			Female			Total		
	Number	%	Rate ¹	Number	%	Rate ¹	Number	%	Rate ¹
White	67	16.5	3.8	28	42.4	1.5	95	20.1	2.6
Black	337	83.0	43.7	37	56.1	4.2	374	79.2	22.7
Other Race	2	0.5	-	1	1.5	-	3	6	-
Total	406	100	15.1	66	100	2.3	472	100	8.5

¹ Rate per 100,000 Population.
 - Rates were not calculated for counts under 5.

Table 4. NUMBERS, PERCENTS, AND RATES OF MARYLAND RESIDENT HOMICIDE VICTIMS BY AGE AND GENDER, 2004.

	Male			Female			Total		
	Number	%	Rate ¹	Number	%	Rate ¹	Number	%	Rate ¹
00 - 04	6	1.5	3.1	6	9.1	4.9	12	2.5	3.2
05 - 09	1	0.2	-	1	1.5	-	2	0.4	-
10 - 14	7	1.7	3.3	0	0.0	-	7	1.5	1.7
15 - 19	59	14.5	29.0	7	10.6	5.5	66	14.0	16.7
20 - 24	109	26.8	58.1	7	10.6	5.9	116	24.6	31.7
25 - 29	78	19.2	47.6	7	10.6	6.3	85	18.0	25.5
30 - 34	44	10.8	24.0	6	9.1	4.7	50	10.6	13.2
35 - 39	32	7.9	15.6	7	10.6	4.8	39	8.3	9.2
40 - 44	24	5.9	10.6	9	13.6	5.6	33	7.0	7.0
45 - 49	22	5.4	5.0	2	3.0	-	24	5.1	5.4
50 - 54	12	3.0	6.6	5	7.6	3.7	17	3.6	4.4
55 - 59	4	1.0	-	3	4.5	-	7	1.5	2.1
60 - 64	2	0.5	-	1	1.5	-	3	0.6	-
65 - 69	2	0.5	-	1	1.5	-	3	0.6	-
70 - 74	1	0.2	-	2	3.0	-	3	0.6	-
75 - 79	1	0.2	-	1	1.5	-	2	0.4	-
80 - 84	1	0.2	-	1	1.5	-	2	0.4	-
Unknown	1	0.2	-	0	0.0	-	1	0.2	-
Total	406	100	15.1	66	100	2.3	472	100	8.5

¹ Rate per 100,000 Population.
 - Rates were not calculated for counts under 5.

Table 5. NUMBERS AND PERCENTS OF MARYLAND RESIDENT HOMICIDE VICTIMS BY MARITAL STATUS AND AGE, 2004.

	< 18 Years		18-34 Years		35-54 Years		55-74 Years		> 75 Years		Total	
	Number	%	Number	%	Number	%	Number	%	Number	%	Number	%
Married	0	0	23	8.1	38	33.6	5	31.3	1	20	67	14.2
Unmarried	53	100	262	91.9	73	64.6	11	68.8	4	80	403	85.5
<i>Never Married</i>	53	100	254	89.1	53	46.9	7	43.8	1	20	368	78
<i>Divorced</i>	0	0	8	2.8	20	17.7	2	12.5	0	0	30	6.4
<i>Widowed</i>	0	0	0	0	0	0	2	12.5	3	60	5	1.1
Unknown	0	0	0	0	2	1.8	0	0	0	0	2	0.4
Total	53	100	285	100	113	100	16	100	5	100	472	100

Note: *Never Married, Divorced, and Widowed* are subsets of the *Unmarried* group.

Table 6. ADDITIONAL MARYLAND RESIDENT HOMICIDE VICTIM CHARACTERISTICS, 2004.

Victim Characteristics	Number	%
Veteran	22	4.7
Autopsy Performed	472	100.0
Injured at Work	3	0.6
Homeless	12	2.5

Table 7. NUMBERS, PERCENTS, AND RATES OF MARYLAND RESIDENT HOMICIDE DEATH BY JURISDICTION OF RESIDENCE, 2004.

County	Number	%	Rate ¹
Allegany County	1	0.2	-
Anne Arundel County	19	4.0	3.7
Baltimore City	266	56.4	41.8
Baltimore County	32	6.8	4.1
Calvert County	1	0.2	-
Caroline County	0	0.0	-
Carroll County	0	0.0	-
Cecil County	3	0.6	-
Charles County	4	0.8	-
Dorchester County	2	0.4	-
Frederick County	3	0.6	-
Garrett County	1	0.2	-
Harford County	4	0.8	-
Howard County	4	0.8	-
Kent County	0	0.0	-
Montgomery County	20	4.2	2.2
Prince George's County	97	20.6	11.5
Queen Anne's County	1	0.2	-
Somerset County	0	0.0	-
St. Mary's County	4	0.8	-
Talbot County	0	0.0	-
Washington County	3	0.6	-
Wicomico County	4	0.8	-
Worcester County	1	0.2	-
Unknown	2	0.4	-
Total	472	100	8.5

¹ Rates per 100,000 Population

- Rates were not calculated for counts under 5.

Figure 3. PERCENT OF MARYLAND RESIDENT HOMICIDES BY DAY OF INJURY OCCURRENCE, 2004.

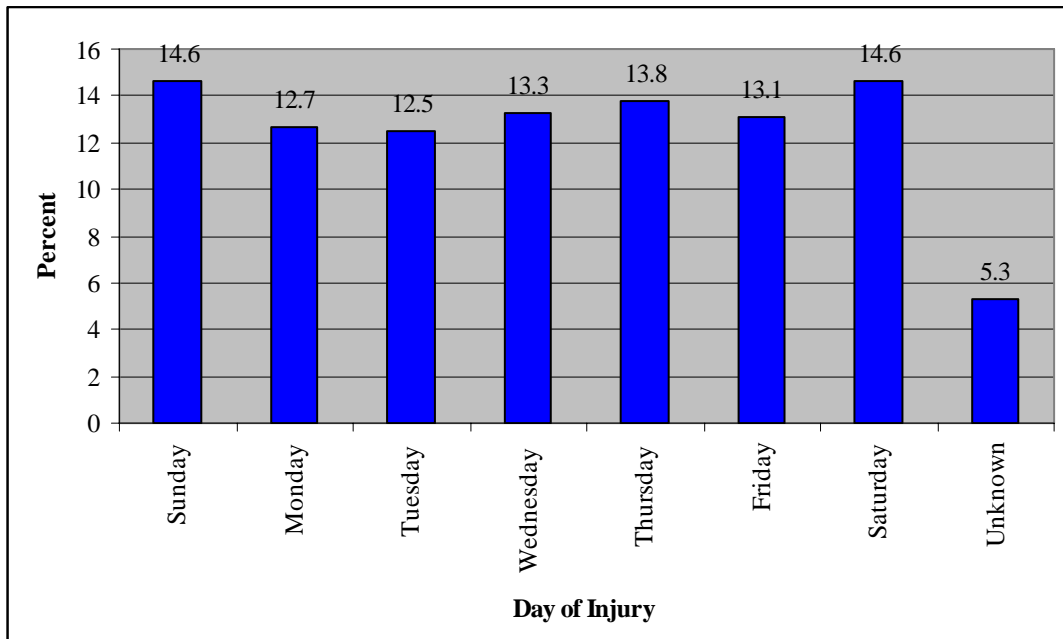
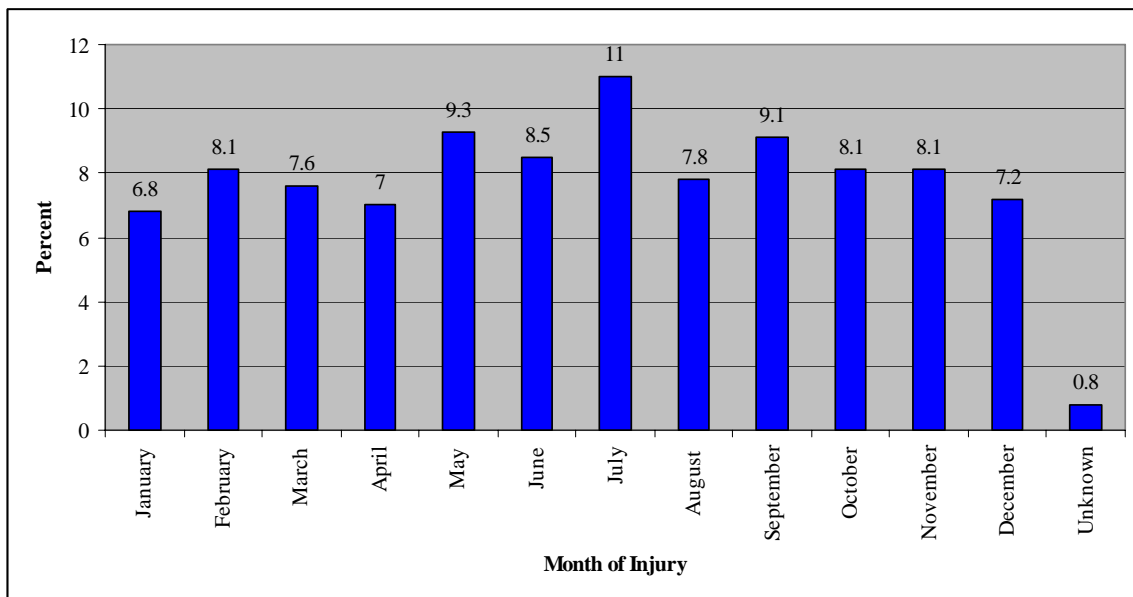


Figure 4. PERCENT OF MARYLAND RESIDENT HOMICIDES BY MONTH OF INJURY OCCURRENCE, 2004.



STATE OCCURRENT HOMICIDE CIRCUMSTANCES, 2004

Although there were 472 Maryland resident homicides, there were a total of 516 state occurrent homicides. Circumstances were known in 273 (52.9%) incidents out of the total 516 state occurrent homicides. Only known circumstances are detailed.

- ❖ Of known circumstances, all victims that died in an institution were under 35 years of age.
- ❖ Of known circumstances, the average age of victims involved in intimate partner violence was 38 years of age.
- ❖ Of the 69 incidents where homicide was precipitated by another crime, 59 of those crimes were still in progress.

*** NOTE: For Homicide Circumstances, All State Occurrent Event Data (a count of deaths occurring in the state regardless of the victims' state of residence) are used to describe this section. ***

Table 8. Circumstances Involving State Occurrent Homicide in Maryland (N=273 Homicides)

Victim Circumstances	Number	%
Argument over Money/Property	18	6.6
Other Argument, Abuse, Conflict	102	37.4
Jealousy/Lover's Triangle	12	4.4
Intimate Partner Violence	32	11.7
Drug Involvement	50	18.3
Gang Related	1	0.4
Institutional	3	1.1
Justifiable Self-Defense/Law Enforcement	16	5.9
Other	107	39.2
Precipitated by Another Crime	69	25.3

Note: Some victims may exhibit more than one circumstantial event.

Table 9. Weapon or Other Mechanism of Injury in State Occurrent Homicide, by Specific Circumstances

Weapon	Argument Over Money/Property		Intimate Partner Violence Related		Justifiable Self Defense/ Law Enforcement	
	Number	%	Number	%	Number	%
Fall	1	5.5	1	3.12	0	0
Fire or Burn	2	11.1	1	3.12	0	0
Firearm	9	50.0	21	65.6	14	87.5
Hanging, Strangulation, Suffocation	1	5.5	3	9.3	0	0
Personal Weapons	1	5.5	0	0	0	0
Sharp Instrument	3	16.6	5	15.6	1	6.2
Unknown	1	5.5	0	0	0	0
Other	0	0	1	3.1	1	6.2
Total	18	100	32	100	16	100

MARYLAND RESIDENT SUICIDE, 2004

HIGHLIGHTED FINDINGS

- ❖ There were 471 Maryland resident suicides (8.5 per 100,000). (Table 10)
- ❖ The median age for suicide victims was 46 years and the average age of suicide victims was 46.7 years.
- ❖ The 50-54 year old age group had the most occurrences of suicides (61 deaths or 13% of all suicides). (Table 10)
- ❖ The suicide rate was highest among 75-79 year old adults at 16.9 deaths per 100,000 persons, which is nearly twice the rate of all suicides at 8.5 per 100,000 persons. (Table 10)
- ❖ There were nearly 4 suicides among men for every 1 suicide occurrence among women. (Table 10)
- ❖ Whites accounted for the majority of suicide deaths (83.7%). (Table 10)
- ❖ Whites committed suicide at a rate of almost 3 times the rate of Blacks (10.9 per 100,000 compared to 4.0 per 100,000). (Table 12)
- ❖ Baltimore County (93) had the greatest number of suicides followed by Montgomery County (59). (Table 16)
- ❖ The majority of suicide victims were unmarried (59%). (Table 14)

Table 10. NUMBERS, PERCENTS, AND RATES OF MARYLAND RESIDENT SUICIDE, 2004.

Sex	Number	%	Rate ¹
Male	381	80.9	14.2
Female	90	19.1	3.1
Total	471	100	8.5

Race	Number	%	Rate ¹
White	394	83.7	10.9
Black	66	14	4
Asian/Pacific Islander	9	1.9	3.3
American Indian or Native	2	0.4	-
Total	471	100	8.5

Age Group	Number	%	Rate ¹
10 – 14	7	1.5	1.7
15 – 19	18	3.8	4.5
20 – 24	37	7.9	10.1
25 – 29	24	5.1	7.2
30 – 34	30	6.4	7.9
35 – 39	52	11	12.3
40 – 44	55	11.7	11.7
45 – 49	49	10.4	11.1
50 – 54	61	13	15.8
55 – 59	26	5.5	7.9
60 – 64	32	6.8	13.1
65 – 69	19	4	10.6
70 – 74	19	4	12.9
75 – 79	21	4.5	16.9
80 – 84	13	2.8	12.8
85+	8	1.7	9.7
Total	471	100	8.5

¹ Rate per 100,000 Population.

- Rates were not calculated for counts under 5

Figure 5. AGE DISTRIBUTION OF MARYLAND SUICIDE RESIDENTS, 2004.

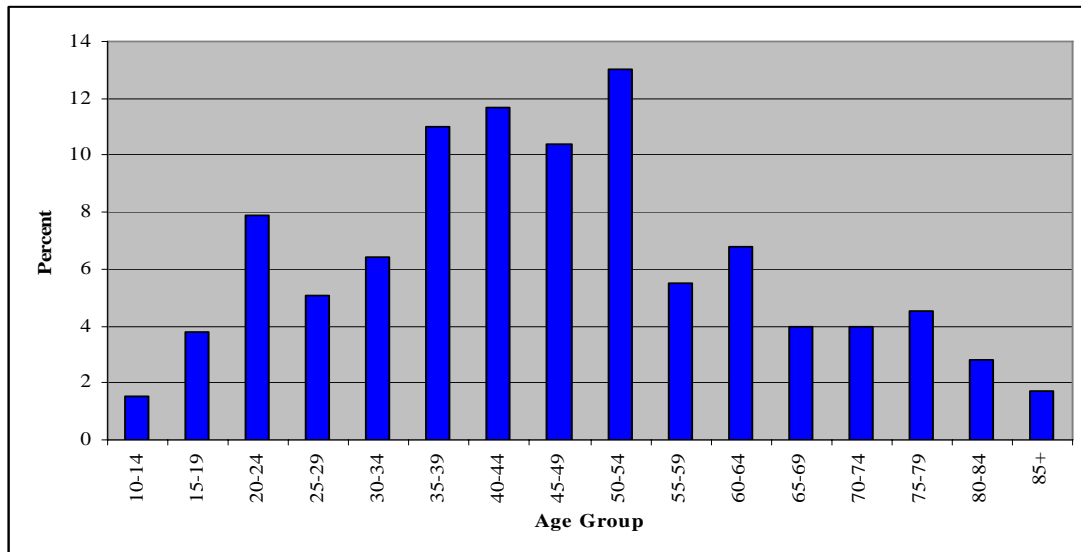


Table 11. METHOD OF FATAL INJURY AMONG MARYLAND SUICIDE VICTIMS, 2004.

Method of Fatal Injury	Number	%
Firearm	236	50.1
Hanging, Strangulation, Suffocation	116	24.6
Poisoning	79	16.8
Fall	16	3.4
Sharp Instrument	15	3.2
Drowning	5	1.1
Other	2	0.4
Fire or Burns	1	0.2
Motor Vehicle, including Buses	1	0.2
Total	471	100

Table 12. NUMBERS, PERCENTS, AND RATES OF MARYLAND RESIDENT SUICIDES BY RACE AND GENDER, 2004.

	Male			Female			Total		
	Number	%	Rate ¹	Number	%	Rate ¹	Number	%	Rate ¹
White	315	82.7	17.7	79	87.8	4.3	394	83.7	10.9
Black	58	15.2	7.5	8	8.9	0.9	66	14.0	4.0
Other Race	8	2.1	5.6	3	3.3	-	11	2.3	3.7
Total	381	100.0	14.2	90	100	3.1	471	100	8.5

¹ Rate per 100,000 Population.

- Rates were not calculated for counts under 5.

Table 13. NUMBERS, PERCENTS, AND RATES OF MARYLAND RESIDENT SUICIDES BY AGE AND GENDER, 2004.

	Male			Female			Total		
	Number	%	Rate ¹	Number	%	Rate ¹	Number	%	Rate ¹
10 - 14	5	1.3	2.4	2	2.2	-	7	1.5	1.7
15 - 19	15	3.9	7.4	3	3.3	-	18	3.8	4.5
20 - 24	31	8.1	16.5	6	6.7	3.7	37	7.9	10.1
25 - 29	20	5.2	12.2	4	4.4	-	24	5.1	7.2
30 - 34	25	6.6	13.7	5	5.6	2.8	30	6.4	7.9
35 - 39	42	11.0	20.5	10	11.1	5.1	52	11.0	12.3
40 - 44	46	12.1	20.3	9	10.0	4.1	55	11.7	11.7
45 - 49	38	10.0	8.6	11	12.2	5.3	49	10.4	11.1
50 - 54	45	11.8	24.6	16	17.8	8.8	61	13.0	15.8
55 - 59	18	4.7	11.4	8	8.9	5.2	26	5.5	7.9
60 - 64	31	8.1	26.8	1	1.1	-	32	6.8	13.1
65 - 69	15	3.9	18.2	4	4.4	-	19	4.0	10.6
70 - 74	12	3.1	18.3	7	7.8	9.6	19	4.0	12.9
75 - 79	19	5.0	37.2	2	2.2	-	21	4.5	16.9
80 - 84	11	2.9	29.6	2	2.2	-	13	2.8	12.8
85+	8	2.1	30.4	0	0.0	-	8	1.7	9.7
Total	381	100	14	90	100.0	3.1	471	100	8.5

¹ Rate per 100,000 Population.
 - Rates were not calculated for counts under 5.

Table 14. NUMBERS AND PERCENTS OF MARYLAND RESIDENT SUICIDES BY MARITAL STATUS AND AGE, 2004.

	< 18 Years		18-34 Years		35-54 Years		55-74 Years		> 75 Years		Total	
	Number	%	Number	%	Number	%	Number	%	Number	%	Number	%
Married	0	0	20	19.6	103	47.5	51	53.1	15	35.7	189	40.1
Unmarried	14	100	81	79.4	113	52	43	44.8	27	64.2	278	58.9
<i>Never Married</i>	<i>14</i>	<i>100</i>	<i>73</i>	<i>71.6</i>	<i>63</i>	<i>29</i>	<i>5</i>	<i>5.2</i>	<i>3</i>	<i>7.1</i>	<i>158</i>	<i>33.5</i>
<i>Divorced</i>	<i>0</i>	<i>0</i>	<i>8</i>	<i>7.8</i>	<i>43</i>	<i>19.8</i>	<i>22</i>	<i>22.9</i>	<i>4</i>	<i>9.5</i>	<i>77</i>	<i>16.3</i>
<i>Widowed</i>	<i>0</i>	<i>0</i>	<i>0</i>	<i>0</i>	<i>7</i>	<i>3.2</i>	<i>16</i>	<i>16.7</i>	<i>20</i>	<i>47.6</i>	<i>43</i>	<i>9.1</i>
Unknown	0	0	1	1	1	0.5	2	2.1	0	0	4	0.8
Total	14	100	102	100	217	100	96	100	42	99.9	471	99.8

Note: *Never Married, Divorced, and Widowed* are subsets of the *Unmarried* group.

Table 15. ADDITIONAL MARYLAND RESIDENT SUICIDE VICTIM CHARACTERISTICS, 2004.

Victim Characteristics	Number	%
Veteran	97	20.6
Autopsy Performed	360	76.4
Injured at Work	5	1.1

Table 16. NUMBERS, PERCENTS, AND RATES OF MARYLAND RESIDENT SUICIDE DEATH BY JURISDICTION OF RESIDENCE, 2004.

County	Number	%	Rate ¹
Allegany County	13	2.8	17.6
Anne Arundel County	44	9.3	8.7
Baltimore City	28	5.9	4.4
Baltimore County	93	19.7	11.9
Calvert County	11	2.3	12.7
Caroline County	3	0.6	-
Carroll County	20	4.2	12.0
Cecil County	16	3.4	16.7
Charles County	12	2.5	8.8
Dorchester County	8	1.7	25.9
Frederick County	12	2.5	5.5
Garrett County	4	0.8	-
Harford County	20	4.2	8.5
Howard County	18	3.8	6.7
Kent County	4	0.8	-
Montgomery County	59	12.5	6.4
Prince George's County	50	10.6	5.9
Queen Anne's County	4	0.8	-
Somerset County	2	0.4	-
St. Mary's County	7	1.5	7.4
Talbot County	7	1.5	20.0
Washington County	15	3.2	10.7
Wicomico County	13	2.8	14.6
Worcester County	7	1.5	14.3
Unknown	1	0.2	-
Total	471	100	8.5

¹ Rate per 100,000 Population.

- Rates were not calculated for counts under 5.

Figure 6. PERCENT OF MARYLAND RESIDENT SUICIDES BY DAY OF INJURY OCCURRENCE, 2004.

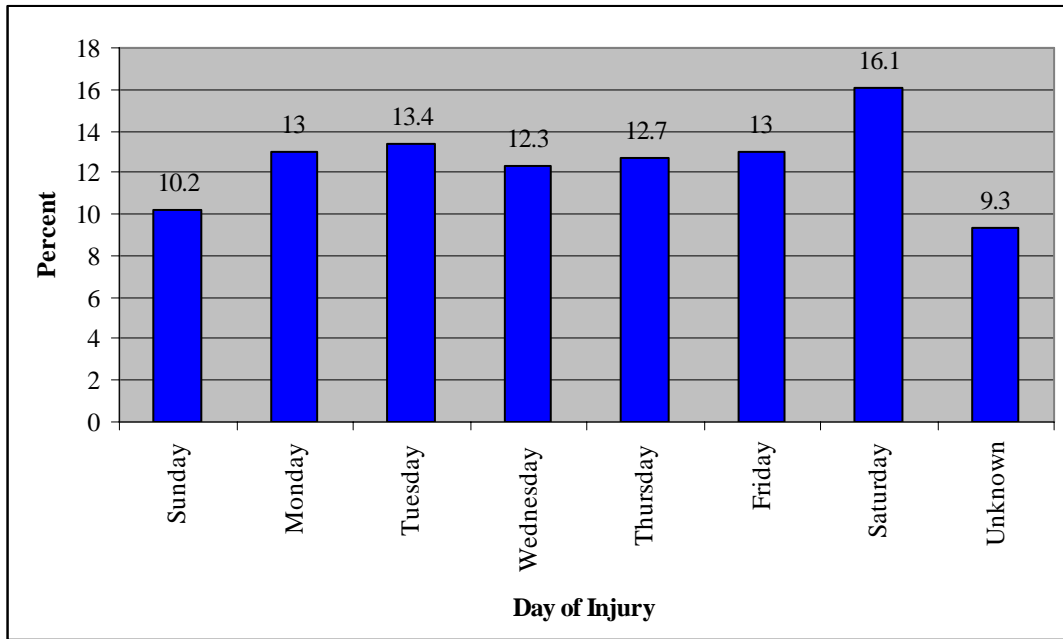


Figure 7. PERCENT OF MARYLAND RESIDENT SUICIDES BY MONTH OF INJURY OCCURRENCE, 2004.

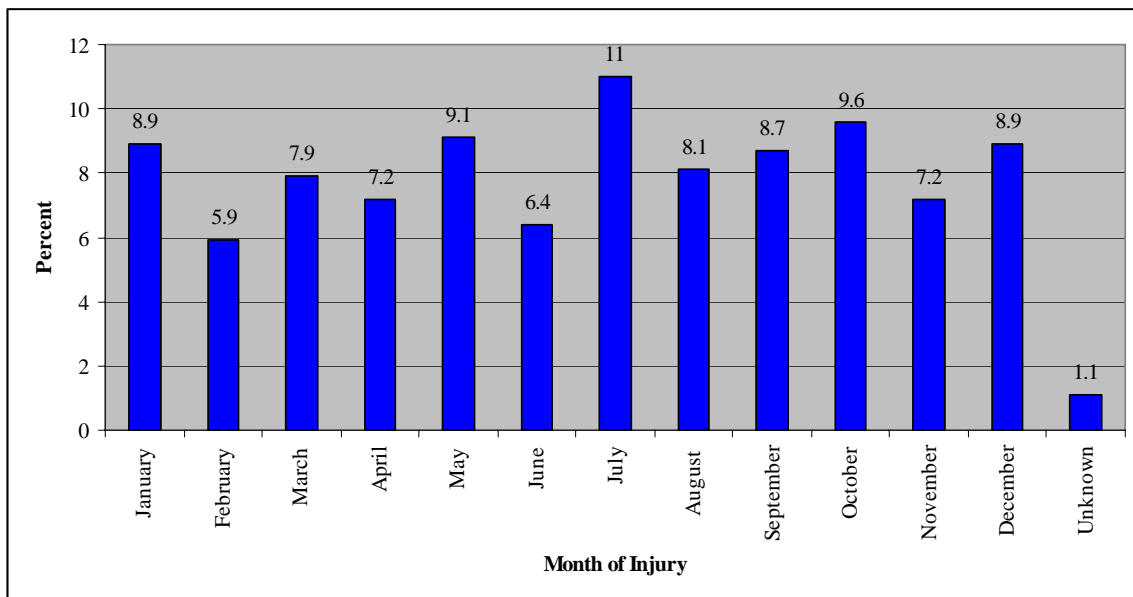


Table 17. MARYLAND RESIDENT SUICIDE CIRCUMSTANCE CHARACTERISTICS, 2004.

* Circumstances are known for 441 of the 471 suicide victims. Circumstance information is given only for the 441 victims for whom circumstances are known.

Circumstances	Number	%
Alcohol Problem	86	19.5
Other Substance Abuse Problem	73	16.6
Suicide Attempt History	93	21.1
Ever Treated for Mental Illness	230	52.2
Current Mental Health Problem	231	52.4
Current Treatment of Mental Illness	183	41.5
Current Depressed Mood	139	31.5
Disclosed Suicide Attempt	111	25.2
Suicide Note	149	33.8
Crisis within 2 Weeks	122	27.7
Intimate Partner Problem	92	20.9
Other Relationship Problem	32	7.3
Financial Problem	32	7.3
Job Problem	47	10.7
School Problem	4	0.9
Physical Health Problem	54	12.2
Suicide of Another within 5 years	3	0.7
Death of Another within 5 years	28	6.3
Perpetrator of Interpersonal Violence in Past Month	21	4.8
Victim of Interpersonal Violence in Past Month	2	0.5
Criminal Legal Problems	38	8.6
Other Legal Problems	5	1.1

MARYLAND RESIDENT SUICIDE - HIGHLIGHTED FINDINGS—MENTAL ILLNESS WHERE CIRCUMSTANCES ARE KNOWN, 2004

When looking at only the known circumstances, there were 231 cases in which suicide victims were identified as having a mental health problem.

- ❖ 183 (79.2%) victims with a mental health problem were currently being treated at the time of their death.
- ❖ 60 (26%) victims with a mental health problem were reported to have been currently in a depressed mood.
- ❖ 42.2% (186) of decedents with a mental health issue suffered from depression.
- ❖ 3.2% (14) of decedents with a mental health issue suffered from bipolar disorder.
- ❖ 78.5% (11) of victims suffering from bipolar disorder were currently receiving treatment.
- ❖ 99.5% (185) of victims diagnosed with depression had at some point received treatment.
- ❖ 100% (14) of victims diagnosed with bipolar disorder had at some point in their lives received treatment

MARYLAND RESIDENT DEATHS OF UNDETERMINED MANNER, 2004

HIGHLIGHTED FINDINGS

- ❖ There were a total of 576 deaths (10.4 per 100,000) of undetermined manner in Maryland. (Table 18)
- ❖ The median age for undetermined manner victims was 41.0 years of age. The mean age for undetermined manner victims was 40.7 years old.
- ❖ The greatest number of undetermined deaths (117 or 20.3%) occurred among individuals 45-49 years old. (Table 18)
- ❖ There were approximately 2.3 male deaths for every female death. (Table 18)
- ❖ The majority of undetermined deaths occurred among White persons (373 or 64.8%). (Table 18)
- ❖ The majority of undetermined death victims were unmarried (410 or 71.1%). (Table 22)
- ❖ Blacks have a slightly higher rate than Whites. (12.1 per 100,000 and 10.3 per 100,000, respectively). (Table 20)
- ❖ Baltimore City (240) and Baltimore County (79) had the highest number of undetermined deaths. (Table 24)

Table 18. NUMBERS, PERCENTS, AND RATES OF MARYLAND RESIDENT DEATHS OF UNDETERMINED MANNER, 2004.

Gender	Number	%	Rate ¹
Male	403	70.0	15.0
Female	173	30.0	6.0
Total	576	100.0	10.4

Race	Number	%	Rate ¹
White	373	64.8	10.3
Black	199	34.5	12.1
Asian	2	0.3	-
American Indian or Native	2	0.3	-
Total	576	100.0	10.4

Age	Number	%	Rate ¹
00-04	2	0.3	-
10-14	2	0.3	-
15-19	7	1.2	1.8
20-24	29	5.0	7.9
25-29	51	8.9	15.3
30-34	63	10.9	16.7
35-39	98	17.0	23.1
40-44	107	18.6	22.7
45-49	116	20.1	26.2
50-54	59	10.2	15.3
55-59	19	3.3	5.8
60-64	12	2.1	4.9
65-69	5	0.9	2.8
70-74	2	0.3	-
75-79	2	0.3	-
80-84	2	0.3	-
Total	576	100.0	10.4

¹ Rate per 100,000 Population.

- Rates were not calculated for counts under 5.

Figure 8. AGE DISTRIBUTION OF MARYLAND RESIDENT DEATHS OF UNDETERMINED MANNER, 2004.

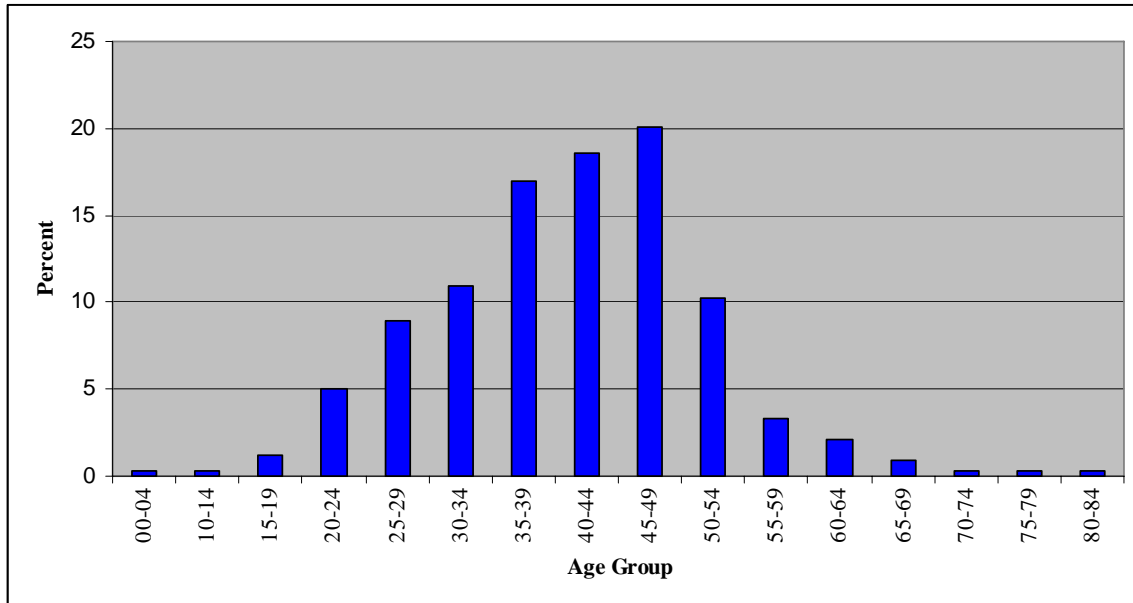


Table 19. METHOD OF FATAL INJURY AMONG MARYLAND RESIDENT DEATHS OF UNDETERMINED MANNER, 2004.

Method of Fatal Injury	Number	%
Poisoning	542	94.1
Fall	7	1.2
Hanging, Strangulation, Suffocation	3	0.5
Drowning	2	0.3
Fire or Burns	2	0.3
Other Transport Vehicle (Trains, Planes, Boats)	2	0.3
Sharp Instrument	2	0.3
Motor Vehicle, including Buses, Motorcycles	1	0.2
Other	12	2.1
Unknown	3	0.5
Total	576	100.0

Table 20. NUMBERS, PERCENTS, AND RATES OF MARYLAND RESIDENT DEATHS OF UNDETERMINED MANNER BY RACE AND GENDER, 2004.

Race	Male			Female			Total		
	Number	%	Rate ¹	Number	%	Rate ¹	Number	%	Rate ¹
White	263	65.3	14.8	110	63.6	6.0	373	64.8	10.3
Black	137	34.0	17.8	62	35.8	7.1	199	34.5	12.1
Other Race	3	0.7	-	1	0.6	-	4	0.7	-
Total	403	100.0	15.0	173	100.0	6.0	576	100.0	10.4

¹ Rate per 100,000 Population.

- Rates were not calculated for counts under 5.

Table 21. NUMBERS, PERCENTS, AND RATES OF MARYLAND RESIDENT DEATHS OF UNDETERMINED MANNER BY AGE AND GENDER, 2004.

Age	Male			Female			Total Number		
	Number	%	Rate ¹	Number	%	Rate ¹	Number	%	Rate ¹
0-4	0	0.0	-	2	1.2	-	2	0.3	-
10-14	1	0.2	-	1	0.6	-	2	0.3	-
15-19	6	1.5	3.0	1	0.6	-	7	1.2	1.8
20-24	22	5.5	11.7	7	4.0	3.9	29	5.0	7.9
25-29	39	9.7	23.8	12	6.9	7.1	51	8.9	15.3
30-34	45	11.2	24.6	18	10.4	9.2	63	10.9	16.7
35-39	74	18.4	36.1	24	13.9	11.0	98	17.0	23.1
40-44	72	17.9	31.7	35	20.2	14.4	107	18.6	22.7
45-49	71	17.6	33.3	45	26.0	19.6	116	20.1	26.2
50-54	42	10.4	22.9	17	9.8	8.4	59	10.2	15.3
55-59	15	3.7	9.5	4	2.3	-	19	3.3	5.8
60-64	8	2.0	6.9	4	2.3	-	12	2.1	4.9
65-69	4	1.0	-	1	0.6	-	5	0.9	2.8
70-74	1	0.2	-	1	0.6	-	2	0.3	-
75-79	2	0.5	-	0	0.0	-	2	0.3	-
80-84	1	0.2	-	1	0.6	-	2	0.3	-
Total	403	100.0	15.0	173	100.0	6.0	576	100.0	10.4

¹ Rate per 100,000 Population.

- Rates were not calculated for counts under 5.

Table 22. NUMBERS AND PERCENTS OF MARYLAND RESIDENT DEATHS OF UNDETERMINED MANNER BY MARITAL STATUS AND AGE, 2004.

	< 18 Years		18-34 Years		35-54 Years		55-74 Years		> 75 Years		Total	
	Number	%	Number	%	Number	%	Number	%	Number	%	Number	%
Married	0	0.0	31	20.9	114	30.0	7	18.4	2	50.0	154	26.7
Unmarried	6	100.0	115	77.7	257	67.6	29	76.3	2	50.0	409	71.0
<i>Never Married</i>	5	83.3	107	72.3	148	38.9	5	13.2	0	0.0	265	46.0
<i>Divorced</i>	1	16.7	8	5.4	99	26.1	14	36.8	2	50.0	124	21.5
<i>Widowed</i>	0	0.0	0	0.0	10	2.6	10	26.3	0	0.0	20	3.5
Unknown	0	0.0	2	1.4	9	2.4	2	5.3	0	0.0	13	2.3
Total	6	100	148	100.0	380	100.0	38	100.0	4	100.0	576	100.0

Note: Never Married, Divorced, and Widowed are subsets of the Unmarried group.

Table 23. ADDITIONAL CHARACTERISTICS OF MARYLAND RESIDENT DEATHS OF UNDETERMINED MANNER, 2004.

Victim Characteristics	Number	%
Veteran	63	10.9
Autopsy Performed	568	98.6
Injured at Work	7	1.2
Homeless	21	3.6

Table 24. NUMBERS, PERCENTS, AND RATES OF MARYLAND RESIDENT DEATHS OF UNDETERMINED MANNER BY JURISDICTION OF RESIDENCE, 2004.

County	Number	%	Rate¹
Allegany	9	1.6	12.2
Anne Arundel	46	8.0	9.0
Baltimore City	240	41.7	37.7
Baltimore County	79	13.7	10.1
Calvert	5	0.9	5.8
Caroline	2	0.3	-
Carroll	12	2.1	7.2
Cecil	18	3.1	18.8
Charles	10	1.7	7.4
Dorchester	2	0.3	-
Frederick	14	2.4	6.4
Garrett	1	0.2	-
Harford	18	3.1	7.6
Howard	13	2.3	4.9
Montgomery	27	4.7	2.9
Prince George's	43	7.5	5.1
Queen Anne's	5	0.9	11.1
Somerset	3	0.5	-
St. Mary's	3	0.5	-
Washington	11	1.9	7.9
Wicomico	8	1.4	9.0
Worcester	6	1.0	12.3
Unspecified	1	0.2	
Total	576	100.0	10.4

¹ Rate per 100,000 Population.

- Rates were not calculated for counts under 5.

Figure 9. PERCENT OF MARYLAND RESIDENT DEATHS OF UNDETERMINED MANNER BY DAY OF INJURY OCCURRENCE, 2004.

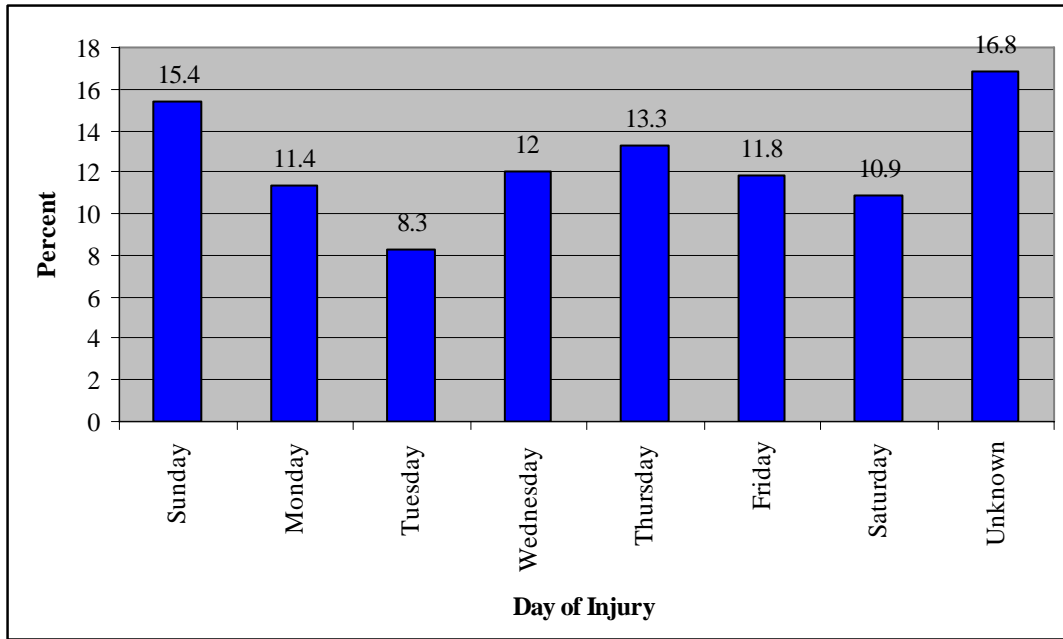
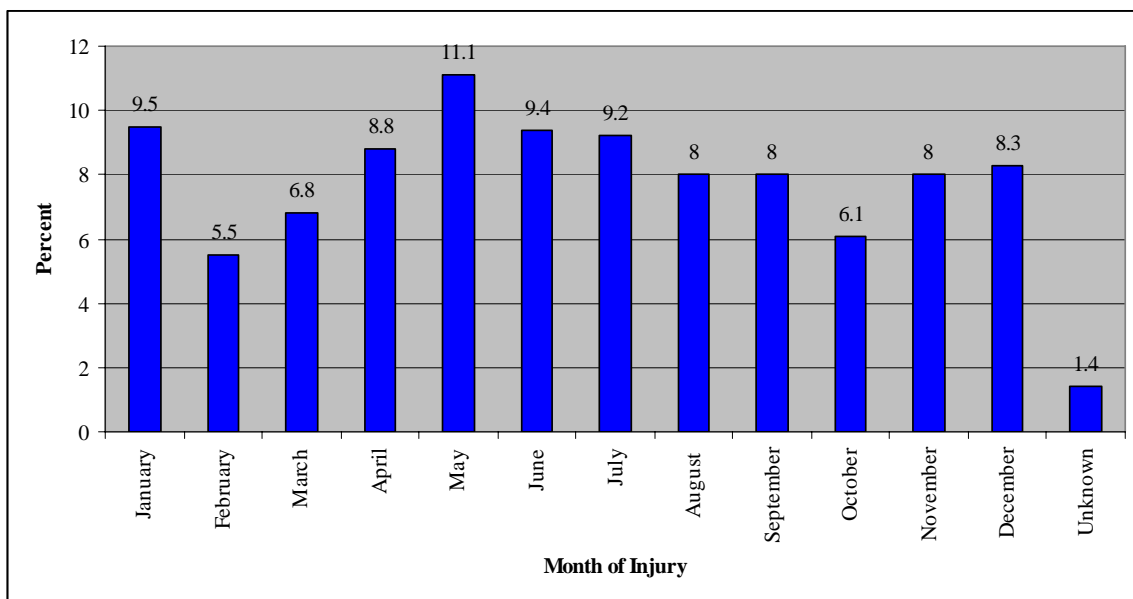


Figure 10. PERCENT OF MARYLAND RESIDENT DEATHS OF UNDETERMINED MANNER BY MONTH OF INJURY OCCURRENCE, 2004.



COMPARISON OF 2003 & 2004 MARYLAND VIOLENT DEATH DATA

Table 25. NUMBERS AND PERCENTS OF ALL MANNERS OF DEATH, 2003 & 2004.

Manner	2003		2004		Combined Years	
	Number	%	Number	%	Number	Total %
Homicide	494	28.7%	472	31.0%	966	29.8%
Suicide	474	27.5%	471	31.0%	945	29.1%
Undetermined	754	43.8%	576	37.9%	1330	41.0%
Accidental	0	0.0%	2	0.1%	2	0.1%
Total	1722	100.0%	1521	100.0%	3243	100.0%

Table 26. NUMBERS AND PERCENTS OF ALL MANNERS OF DEATH BY JURISDICTION, 2003 & 2004.¹

County	2003		2004		Combined Years	
	Number	%	Number	%	Number	Total %
Allegany	29	1.7%	23	1.5%	52	1.6%
Anne Arundel	114	6.6%	109	7.2%	223	6.9%
Baltimore City	604	35.1%	534	35.2%	1138	35.1%
Baltimore County	237	13.8%	204	13.4%	441	13.6%
Calvert	18	1.0%	17	1.1%	35	1.1%
Caroline	8	0.5%	5	0.3%	13	0.4%
Carroll	42	2.4%	32	2.1%	74	2.3%
Cecil	30	1.7%	37	2.4%	67	2.1%
Charles	30	1.7%	26	1.7%	56	1.7%
Dorchester	10	0.6%	12	0.8%	22	0.7%
Frederick	39	2.3%	29	1.9%	68	2.1%
Garrett	4	0.2%	6	0.4%	10	0.3%
Harford	79	4.6%	42	2.8%	121	3.7%
Howard	49	2.8%	35	2.3%	84	2.6%
Kent	7	0.4%	4	0.3%	11	0.3%
Montgomery	104	6.0%	106	7.0%	210	6.5%
Prince George's	220	12.8%	190	12.5%	410	12.7%
Queen Anne's	10	0.6%	10	0.7%	20	0.6%
Somerset	4	0.2%	5	0.3%	9	0.3%
St. Mary's	12	0.7%	14	0.9%	26	0.8%
Talbot	7	0.4%	7	0.5%	14	0.4%
Washington	28	1.6%	29	1.9%	57	1.8%
Wicomico	24	1.4%	25	1.6%	49	1.5%
Worchester	10	0.6%	14	0.9%	24	0.7%
Unspecified	3	0.2%	4	0.3%	7	0.2%
Total	1722	100.0%	1519	100.0%	3241	100.0%

¹Accidental firearms are not included

Table 27. NUMBERS AND PERCENTS OF HOMICIDES BY JURISDICTION, 2003 & 2004.

County	2003		2004		Combined Years	
	Number	%	Number	%	Number	Total %
Allegany	2	0.4%	1	0.2%	3	0.3%
Anne Arundel	18	3.6%	19	4.0%	37	3.8%
Baltimore City	250	50.6%	266	56.4%	516	53.4%
Baltimore County	41	8.3%	32	6.8%	73	7.6%
Calvert	3	0.6%	1	0.2%	4	0.4%
Caroline	1	0.2%	0	0.0%	1	0.1%
Carroll	2	0.4%	0	0.0%	2	0.2%
Cecil	2	0.4%	3	0.6%	5	0.5%
Charles	6	1.2%	4	0.8%	10	1.0%
Dorchester	2	0.4%	2	0.4%	4	0.4%
Frederick	4	0.8%	3	0.6%	7	0.7%
Garrett	0	0.0%	1	0.2%	1	0.1%
Harford	6	1.2%	4	0.8%	10	1.0%
Howard	8	1.6%	4	0.8%	12	1.2%
Kent	0	0.0%	0	0.0%	0	0.0%
Montgomery	18	3.6%	20	4.2%	38	3.9%
Prince George's	123	24.9%	97	20.6%	220	22.8%
Queen Anne's	0	0.0%	1	0.2%	1	0.1%
Somerset	2	0.4%	0	0.0%	2	0.2%
St. Mary's	2	0.4%	4	0.8%	6	0.6%
Talbot	1	0.2%	0	0.0%	1	0.1%
Washington	1	0.2%	3	0.6%	4	0.4%
Wicomico	2	0.4%	4	0.8%	6	0.6%
Worcester	0	0.0%	1	0.2%	1	0.1%
Unspecified	0	0.0%	2	0.4%	2	0.2%
Total	494	100.0%	472	100.0%	966	100.0%

Table 28. NUMBERS AND PERCENTS OF SUICIDES BY JURISDICTION, 2003 & 2004.

County	2003		2004		Combined Years	
	Number	%	Number	%	Number	Total %
Allegany	9	1.9%	13	2.8%	22	2.3%
Anne Arundel	50	10.5%	44	9.3%	94	9.9%
Baltimore City	52	11.0%	28	5.9%	80	8.5%
Baltimore County	65	13.7%	93	19.7%	158	16.7%
Calvert	10	2.1%	11	2.3%	21	2.2%
Caroline	2	0.4%	3	0.6%	5	0.5%
Carroll	17	3.6%	20	4.2%	37	3.9%
Cecil	15	3.2%	16	3.4%	31	3.3%
Charles	13	2.7%	12	2.5%	25	2.6%
Dorchester	3	0.6%	8	1.7%	11	1.2%
Frederick	26	5.5%	12	2.5%	38	4.0%
Garrett	2	0.4%	4	0.8%	6	0.6%
Harford	29	6.1%	20	4.2%	49	5.2%
Howard	24	5.1%	18	3.8%	42	4.4%
Kent	6	1.3%	4	0.8%	10	1.1%
Montgomery	49	10.3%	59	12.5%	108	11.4%
Prince George's	54	11.4%	50	10.6%	104	11.0%
Queen Anne's	4	0.8%	4	0.8%	8	0.8%
Somerset	0	0.0%	2	0.4%	2	0.2%
St. Mary's	6	1.3%	7	1.5%	13	1.4%
Talbot	2	0.4%	7	1.5%	9	1.0%
Washington	19	4.0%	15	3.2%	34	3.6%
Wicomico	12	2.5%	13	2.8%	25	2.6%
Worcester	3	0.6%	7	1.5%	10	1.1%
Unspecified	2	0.4%	1	0.2%	3	0.3%
Total	474	100.0%	471	100.0%	945	100.0%

Table 29. NUMBERS AND PERCENTS OF DEATHS OF UNDETERMINED MANNER BY JURISDICTION, 2003 & 2004.

County	2003		2004		Combined Years	
	Number	%	Number	%	Number	Total %
Allegany	18	2.4%	9	1.6%	27	2.0%
Anne Arundel	46	6.1%	46	8.0%	92	6.9%
Baltimore City	302	40.1%	240	41.7%	542	40.8%
Baltimore County	131	17.4%	79	13.7%	210	15.8%
Calvert	5	0.7%	5	0.9%	10	0.8%
Caroline	5	0.7%	2	0.3%	7	0.5%
Carroll	23	3.1%	12	2.1%	35	2.6%
Cecil	13	1.7%	18	3.1%	31	2.3%
Charles	11	1.5%	10	1.7%	21	1.6%
Dorchester	5	0.7%	2	0.3%	7	0.5%
Frederick	9	1.2%	14	2.4%	23	1.7%
Garrett	2	0.3%	1	0.2%	3	0.2%
Harford	44	5.8%	18	3.1%	62	4.7%
Howard	17	2.3%	13	2.3%	30	2.3%
Kent	1	0.1%		0.0%	1	0.1%
Montgomery	37	4.9%	27	4.7%	64	4.8%
Prince George's	43	5.7%	43	7.5%	86	6.5%
Queen Anne's	6	0.8%	5	0.9%	11	0.8%
Somerset	2	0.3%	3	0.5%	5	0.4%
St. Mary's	4	0.5%	3	0.5%	7	0.5%
Talbot	4	0.5%		0.0%	4	0.3%
Washington	8	1.1%	11	1.9%	19	1.4%
Wicomico	10	1.3%	8	1.4%	18	1.4%
Worcester	7	0.9%	6	1.0%	13	1.0%
Unspecified	1	0.1%	1	0.2%	2	0.2%
Total	754	100.0%	576	100.0%	1330	100.0%

APPENDIX

2004 Maryland Population

Age Group	Total		Age by Gender		Age by Race				by Race & Gender							
	by Age	Male	Female	White	Black	Native American	Asian/PacIsland	White Male	White Female	Black Male	Black Female	Native American Male	Native American Female	Asian/PacIsland Male	Asian/PacIsland Female	
All Ages	5,558,058	2,690,901	2,867,157	3,617,094	1,645,781	20,885	274,298	1,777,157	1,839,937	771,050	874,731	10,387	10,498	132,307	141,991	
0-4	374,578	190,767	183,811	224,912	130,660	977	18,029	114,903	110,009	66,261	64,399	484	493	9,119	8,910	
5-9	368,612	188,200	180,412	224,042	124,797	1,541	18,232	115,086	108,956	63,381	61,416	794	747	8,939	9,293	
10-14	410,324	209,961	200,363	247,180	143,676	1,722	17,746	126,812	120,368	73,148	70,528	906	816	9,095	8,651	
15-19	396,044	203,110	192,934	244,144	132,255	1,645	18,000	126,342	117,802	66,621	65,634	841	804	9,306	8,694	
20-24	366,452	187,657	178,795	225,481	119,893	1,673	19,405	117,333	108,148	59,733	60,160	910	763	9,681	9,724	
25-29	332,750	164,012	168,738	201,346	107,710	1,513	22,181	102,303	99,043	50,263	57,447	801	712	10,645	11,536	
30-34	378,096	183,125	194,971	229,553	120,418	1,574	26,551	114,370	115,183	55,145	65,273	802	772	12,808	13,743	
35-39	424,108	204,950	219,158	265,832	131,762	1,764	24,750	132,125	133,707	60,095	71,667	861	903	11,869	12,881	
40-44	470,463	227,120	243,343	305,233	139,576	1,884	23,770	151,528	153,705	63,526	76,050	915	969	11,151	12,619	
45-49	443,119	213,311	229,808	295,670	124,397	1,716	21,336	146,179	149,491	56,264	68,133	823	893	10,045	11,291	
50-54	385,427	183,029	202,398	262,148	104,176	1,456	17,647	128,943	133,205	45,458	58,718	683	773	7,945	9,702	
55-59	329,905	157,617	172,288	232,437	81,884	1,165	14,419	113,999	118,438	36,356	45,528	546	619	6,716	7,703	
60-64	243,437	115,619	127,818	173,665	57,935	836	11,001	84,432	89,233	25,516	32,419	402	434	5,269	5,732	
65-69	179,114	82,245	96,869	128,271	42,237	508	8,098	60,085	68,186	17,924	24,313	241	267	3,995	4,103	
70-74	146,898	65,632	81,266	109,245	31,765	353	5,535	49,671	59,574	13,264	18,501	169	184	2,528	3,007	
75-79	124,393	51,096	73,297	97,469	23,088	247	3,589	40,601	56,868	8,784	14,304	109	138	1,602	1,987	
80-84	101,586	37,108	64,478	82,757	16,359	149	2,321	30,649	52,108	5,454	10,905	56	93	949	1,372	
85+	82,752	26,342	56,410	67,709	13,193	162	1,688	21,796	45,913	3,857	9,336	44	118	645	1,043	

2004 Maryland Geographic Region Populations

Sum of Year 2004 County	Race				
	Grand Total	Asian/PacIslander	Black	Nat American	White
Allegany County	73871	467	4366	102	68936
Anne Arundel County	508572	15390	75603	1848	415731
Baltimore City	636251	12243	418532	2479	202997
Baltimore County	780821	30880	185969	2559	561413
Calvert County	86474	996	11298	297	73883
Caroline County	31058	188	4547	184	26139
Carroll County	166159	2182	4880	411	158686
Cecil County	95526	955	4625	324	89622
Charles County	135807	3425	45622	1028	85732
Dorchester County	30912	241	8733	78	21860
Frederick County	217653	6089	16708	653	194203
Garrett County	30124	73	165	14	29872
Harford County	235594	4864	26501	623	203606
Howard County	266738	28650	43306	765	194017
Kent County	19582	153	3164	45	16220
Montgomery County	921690	125585	152716	3813	639576
Prince George's County	842967	35380	563904	4239	239444
Queen Anne's County	45078	387	3698	127	40866
Somerset County	25863	178	10836	112	14737
St. Mary's County	94921	2084	13636	406	78795
Talbot County	35017	334	5192	56	29435
Washington County	139624	1574	12500	326	125224
Wicomico County	88782	1607	21623	285	65267
Worcester County	48974	373	7657	111	40833
Grand Total	5558058	274298	1645781	20885	3617094

Discrimination Policy:

The services and facilities of the Maryland Department of Health and Mental Hygiene (DHMH) are operated on a non-discriminatory basis. This policy prohibits discrimination on the basis of race, color, sex, or national origin, and applies to the provisions of employment and granting of advantages, privileges, and accommodations. The Department, in compliance with the Americans With Disabilities Act, ensures that qualified individuals with disabilities are given an opportunity to participate in and benefit from DHMH services, programs, benefits, and employment opportunities.